

IT2BE Components for Servoy

Components Manager

Marcel Trapman 2011

www.servoycomponents.com

Table of Contents

Introduction	5
How to Use	7
Preferences	17

Introduction

Why IT2BE Components Manager

IT2BE Components Manager is your ultimate tool, both **Command Line** and with a **User Interface** to **manage** your **IT2BE Components** installation and licenses.

For those of you that already work with our Components for Servoy 3.x: it is a replacement for our old Update Manager.

For those of you that already work with our Components for Servoy 4.x: it is a replacement for the Eclipse Update Mechanism and our 'Components' Preference Panels.

With IT2BE Components Manager you can:

- **Check** for new releases, output will show information about all Components
- **Install** new Components
- **Uninstall** installed Components
- **Update** installed Components

- **Beta** check out beta versions of our Components
- **Legacy** check out older versions of our Components

- **Import** (new) Components Developer License(s)
- **Export** the installed Components Developer License(s) to a new location

- **Create** an **archive**
- **Unpack** an **archive**

Requirements

IT2BE Components Manager work with both Servoy 4.x and Servoy 5.x.

You need to have the Servoy application server installed in the subfolder 'application_server' but there is no need to have developer installed.

You also need to have Java 1.5 (or higher) installed on a Mac with OS X, a Windows PC or a Linux PC.

[Copyright IT2BE 2010](#)

How to Use

Download

The first thing you have to do (besides reading these help files) is to download `it2be-manager.jar` from the [downloads section](#) of Servoy Components.

Installation

After downloading you have to move the jar file to the root folder of your Servoy installation(s). The root folder is the folder enclosing the 'application_server' subfolder and 'servoy_updater.jar'.

Running Command Line

You can use IT2BE Components Manager as a Command Line application or as a 'normal' application with a User Interface.

To start IT2BE Components Manager in 'Command Line mode' you can use 'Terminal' on Apple OS X, 'Run' or 'Command Prompt' on Windows or 'Konsole', 'Gnome Terminal' or another variant on Linux.

```
java - jar it2be-manager.jar [options] [argument [argument2 [argument3] ...]]
```

Options:

-help,?	print this message
-beta	use this command to reach out to our beta site (use at your own risk)
-legacy	use this command to reach out to our legacy site (use at your own risk)
-check	check for new releases, output will show information about all Components
-install	install new Components
-uninstall	uninstall installed Components
-update	update installed Components
-import	import a (new) Components Developer License
-export	export the installed Components Developer License to a new location
-archive	create an archive
-unarchive	unpack an archive

Argument:

For -install, -uninstall and -update

This is/are the name(s) of Component(s) to process (space delimited) or no arguments when you want to process all listed Components.

For -uninstall

This can also be 'developerFeatures' (without apostrophes) to remove preferences panels

other developer related files (this does not remove the Components).

For -import or -export

A file name is set with the file=filename.xml argument.

IMPORTANT: -import and -export don't work without developer installed.

For -archive

An archive file name is by default formatted as 'it2be-\${timestamp}', all archives have the extension '.archive'.

You can set your own file name by setting file=name.archive.

For -archive or -unarchive

An archive file name must be set with the file=name.archive argument.

Running User Interface

To start IT2BE Components Manager as a **'normal' application** you can double click on the jar/application icon or you can use the Command Line mode as described above without the commands and argument(s).

Starting the User Interface in Command Line mode is especially of interest when you want to check our beta site (in which case the command **-beta** is the only command you must use). When working with the user interface you have the same options as in the Command Line mode plus additionally an option to **request trial licenses**.

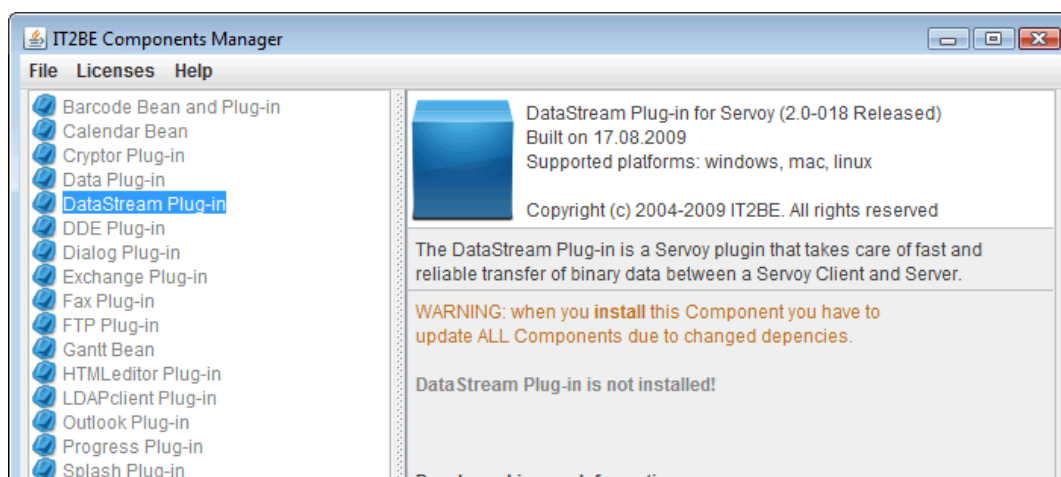
Another difference is that you can install and uninstall all Components with the Command Line mode.

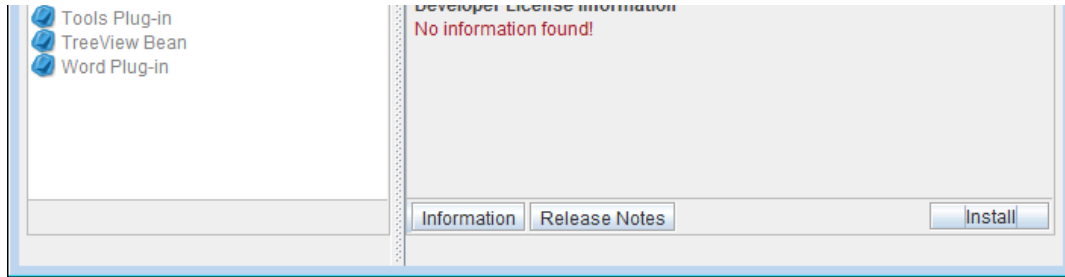
When you use the User Interface you have to do that one by one.

Before you perform an upgrade, downgrade, installation and/or uninstallation an **automated archive** will be created in the same folder as where IT2BE Components Manager is installed. The archive is considered 'save' for 10 minutes and will not be re-created automatically before the 10 minutes are over.

Obviously a new archive is created again after you restarted the app and proceed or when you create an archive manually via the menu File > Archive.

You can again Unarchive the Archive (cross platform) to **re-install** your previous configuration or to use it to **move** your developer component configuration to a production server.





Looking at the IT2BE Components Manager main window you see a tree the your left hand side with all Released Components.

You can identify that Components are not installed by the blueish icon and the gray colored name.

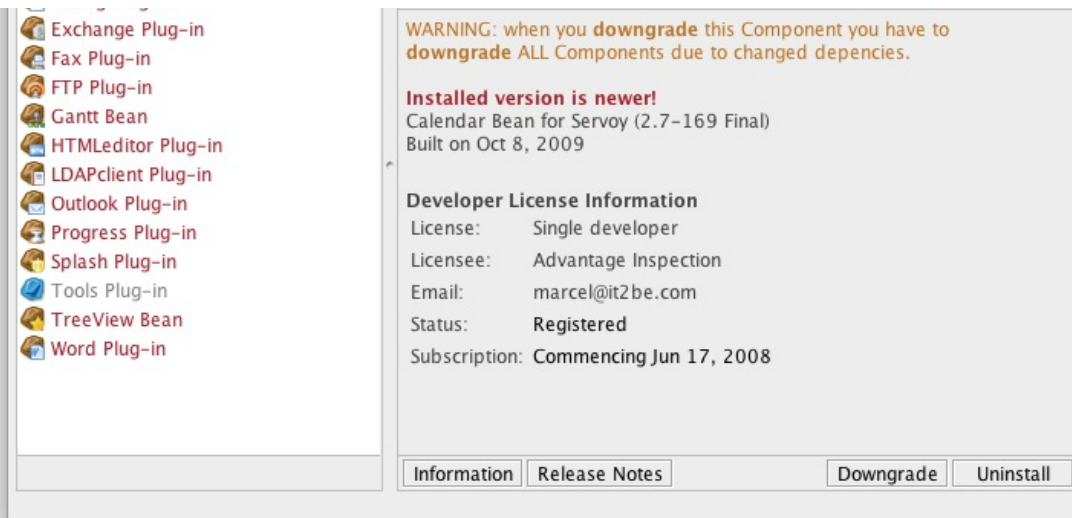
On the top right you see the description, version information etc. of the Released Component.



Installed and up to date Components can be identified by their icon and the blueish colored name in the tree.

The lower right part holds information of the Installed Component and License information (when available).





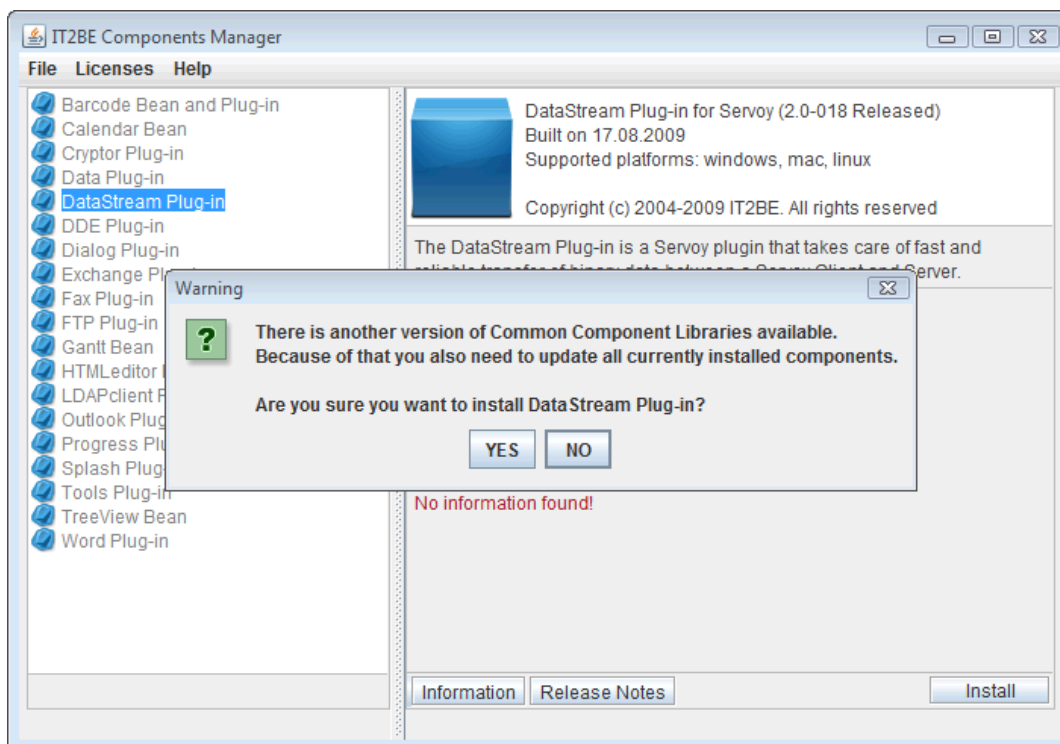
Installed and older or newer Components can be identified by their icon and the red colored name in the tree.

The lower right part gives you license information.

IMPORTANT: License information is only complete when Servoy Developer and the selected Component are installed.

When that is the case you can see information about the license, expiry date (when it is a trial license and the subscription).

However, this information says nothing about the runtime licenses you use since they have to be run from within your source.

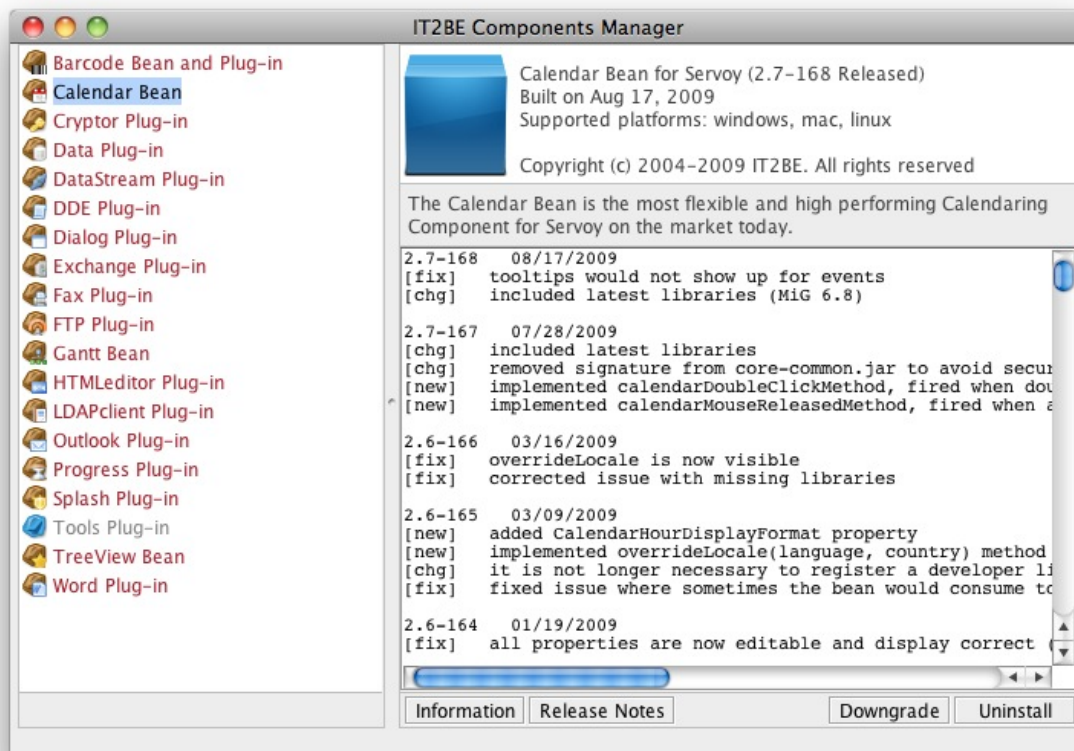


When you want to Upgrade, Downgrade or Install a Component and the Core libraries are not the same as currently installed the above dialog will be presented.

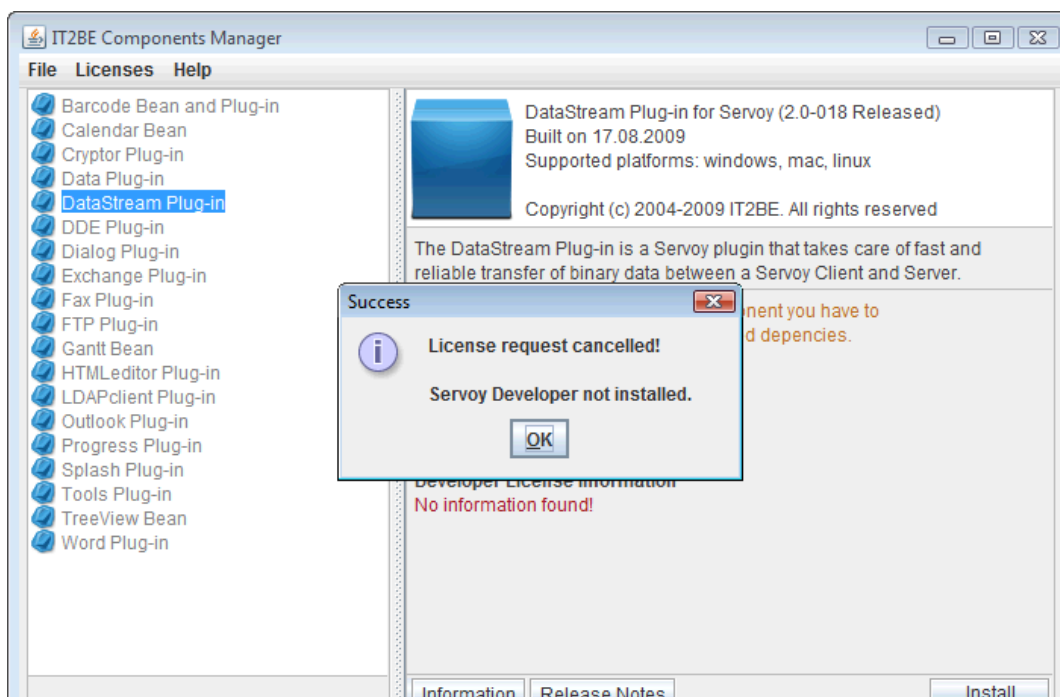
In this case you will have to download all Components.

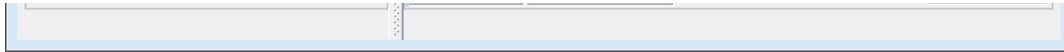
IT2BE Components Manager will automatically check for this, select the Components that need to be updated and create an archive (when not already done).

The same applies when you use the Command Line mode.



By selecting the button 'Release Notes' the most current Release Notes are downloaded and shown.

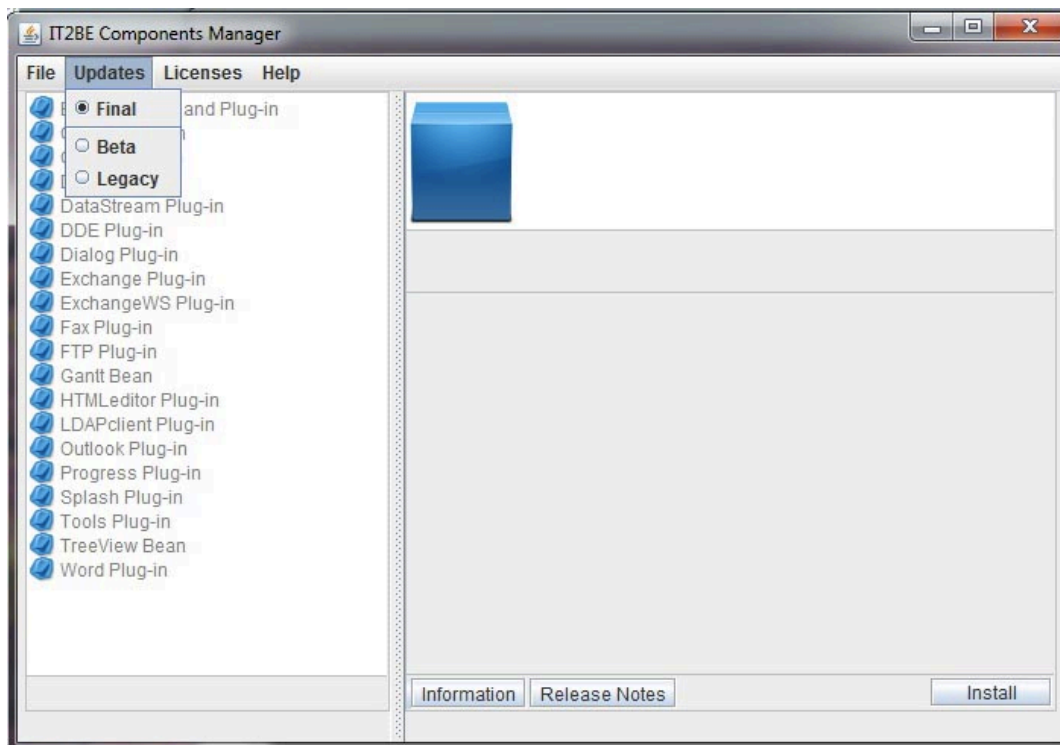




Switching Update Locations

When you select the menu 'Updates' you have three Update Locations that you can choose from:

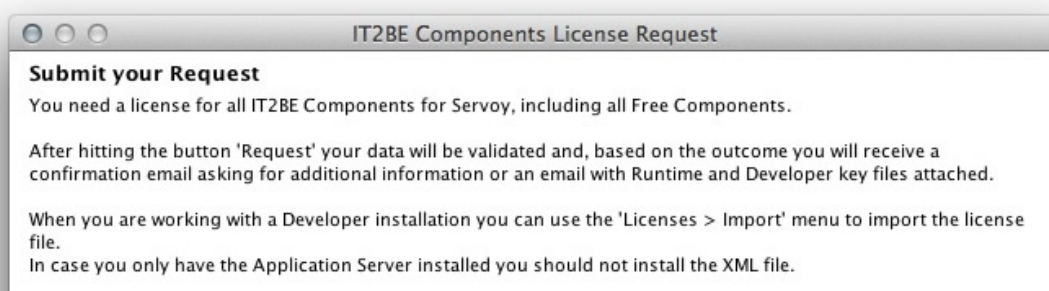
- Final - Released versions of our Components.
- Beta - Pre Released versions of our Components, use with care.
- Legacy - Older versions of our Components.



Requesting licenses

When you try to Request (trial) licenses when Servoy Developer is not installed the above image shows you the dialog that will pop up.

The same dialog will appear when you want to import and/or export Developer Licenses without Servoy Developer installed.



The attached text file includes all Runtime licenses, you have to included these in your solution (startup method is preferred).

Beans (Commercial)

Calendar Bean Gantt Bean TreeView Bean

Plug-ins (Commercial)

Data Plug-in DataStream Plug-in DDE Plug-in Dialog Plug-in
 Exchange Plug-in HTMLeditor Plug-in LDAPclient Plug-in Outlook Plug-in
 Progress Plug-in Word Plug-in

Free Components

Barcode Plug-in Cryptor Plug-in Fax Plug-in FTP Plug-in
 Splash Plug-in Tools Plug-in

You need to select at least one Component!..

< Back

Next >

Request

Cancel

When you select 'Licenses > Request' a new dialog will appear with the above checkboxes. Here you can select the Components you want to request a license for. You need to have at least one Component selected before you can proceed.

IT2BE Components License Request

Submit your Request
 You need a license for all IT2BE Components for Servoy, including all Free Components.

After hitting the button 'Request' your data will be validated and, based on the outcome you will receive a confirmation email asking for additional information or an email with Runtime and Developer key files attached.

When you are working with a Developer installation you can use the 'Licenses > Import' menu to import the license file.
 In case you only have the Application Server installed you should not install the XML file.

The attached text file includes all Runtime licenses, you have to included these in your solution (startup method is preferred).

Last Name First Name

Salutation Registered Name Organization First Name, Last Name

Organization

Street Addr

City State/Prov Zip/Postal

Country Phone

Email

You need to set all fields!..

< Back Next > Request Cancel

When you clicked the button 'Next' you will be asked to enter your credentials. You have to fill all fields with no exception.

The License Server will send you an immediate reply to inform you that the request is received or you will see a message to try again later.

When the reply tells you that a message will be sent there is no reason to hit the 'Request' button again (and again)...

IMPORTANT: The credentials you entered the first time are stored and re-used. It is best not to change them anymore.

The License Server will try to match your data to current registrations.

When there are too many differences you will be asked to check your data and/or add additional information.

When your credentials are found the License Server will send you the requested licenses including all registered (Commercial and Free) licenses.

When the License Server found no credentials it will create a new registration and licenses will be sent automatically.

Please note that, when Commercial Licenses are registered, the License Server needs a matching email domain before licenses are sent out.

Application Feedback

The Components Manager is developed to be verbose.

Everything that is important will be written to the console and, when running from command line, to the terminal.

An average session will show you something like this:

```
USING FINAL UPDATES LOCATION!  
IT2BE COMPONENTS MANAGER VERSION 1.6.024 IS AVAILABLE FOR DOWNLOAD AT  
HTTP://WWW.SERVOYCOMPONENTS.COM...  
CREATING ARCHIVE  
Archiving ...  
CREATED ARCHIVE /Users/marceltrapman/Applications/Developer/Servoy 5/it2be-  
1320353942730.archive...  
Downloading HTMLeditor Plug-in  
DOWNLOAD ACCEPTED  
Pushing ...  
Installed HTMLeditor Plug-in (212444 bytes)...  
INSTALLING OK
```

There are a few 'special' messages though:

```
READING DEVELOPER LICENSES CANCELLED: FILE NOT FOUND (NO PANIC)...
```

This message informs you about the absence of a developer license file.

Although this is not really an error it is preferred to import your developer licenses.

When your developer licenses are imported you can find out all about your licenses, subscription etc. using the Components Manager.

```
Failed downloading list of components...
```

The Components Manager can not find the update server.

Failed reading list of components...

The Components Manager can not find the update information on the server.

Failed processing list of components...

The Components Manager can not process the update information.

[Copyright IT2BE 2010](#)

Preferences

Automatically check for updates

The Components Manager can check for new versions on startup of Servoy Developer for you as explained below.

IMPORTANT: Preferences are only available when Servoy Developer is installed and will be of no use without.

